

# BX DNA Loading Dye (5X)

Cat. No: FPLT117.1000

Store at RT

## Contents:

Components	Volume
5X DNA loading dye	1 ml

## Description:

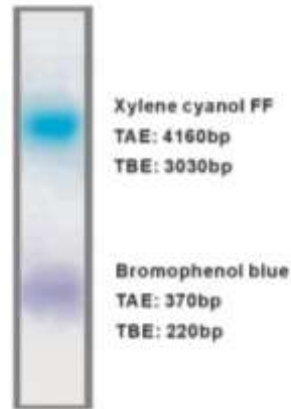
5X DNA Loading Dye is used for loading DNA markers and samples on agarose or polyacrylamide gels. It contains two dyes, bromophenol blue and xylene cyanol FF, for easy visual tracking of DNA migration during electrophoresis.

## Storage:

This product should be stored at RT. Aliquot and freeze at -20 °C for long-term storage

## Features:

In 1 % agarose gels bromophenol blue comigrates with ~300 bp fragment and xylene cyanol FF – with ~4000 bp fragment.



Electrophoresis of tracking dye in 5X DNA loading dye.

## Protocol:

Add 1/5 volume of 5X DNA Loading Dye to your DNA sample.

## Disclaimers and Addresses:

This product is for **Research use only** and should only be used by trained professionals.